

A Letter from Fr. Mike

Dear Friends in Christ,



St. Stephen's is so blessed to have your commitment to Christian Stewardship. It speaks well of your personal relationship with Jesus, your commitment to return first fruits, your desire to share with others, and your role as a modern day disciple. Thank you for keeping our ministries alive!

As we strive to show a rich yield with outstanding parish programs, your stewardship commitment is crucial. Not just financial giving, but the desire to give back to God a portion of *everything* that He has given to us. As part of this, I believe Christian Stewardship requires you and I to be planned and proportionate in our giving.

This Automatic Offering Plan has been developed to help us with that, to keep us disciplined and committed to stewardship, while at the same time, making our life a little simpler. There are so many advantages -- both to you and the Church -- in this type of giving.

I ask you to prayerfully consider "*converting*" to the Automatic Offering Plan. We tried to make it simple to sign up and simple to give throughout the year. In doing so, we can continue to grow together in our relationship with Jesus Christ.

With my gratitude, prayers, and best wishes,

Fr. Michael A. Van Sloun
Pastor

Visit our website at:
www.ststephenchurch.org

"Your kingdom come, Your will be done. . ."

Your contributions to the church are not just about keeping the lights lit and the bills paid. Your contributions fund ministries that serve our greater community and make Christ known to those beyond these walls. Through your stewardship, our community is working to build God's kingdom on earth. Here are some examples.

The Church of St. Stephen:

- Assists over 125 families every Christmas with donated baskets
- Has a Prayer Shawl ministry that has brought comfort to over 200 people
- Continues to serve the needs of the community through Meals on Wheels, ACBC food shelf, Family Table, Loaves & Fishes
- Has a large group of Stephen Ministers that provide ministry to those with physical and mental illness, those in the midst of loss, the homebound and imprisoned.

You're part of a very generous faith community!



"Each of us should give what we decided in our heart to give, not reluctantly or under compulsion, for God loves a cheerful giver."

2 Corinthians 9:7

*Have You
Thought About
"Converting"?*



*Automatic
Offering
Plan*



Automatic Offering - Have You Thought About “Converting”?

Many people have chosen to “convert” from the traditional ways of giving – writing checks each week or month – to a simpler, more dependable way of sharing their first fruits. It’s called automatic offering, and we encourage you to consider this conversion!

It’s Simple and Flexible!

Many of our parishioners enjoy the convenience, safety and reliability of making their weekly or monthly stewardship contributions through St. Stephen’s Automatic Offering Plan. You simply complete the attached form and we’ll do the rest. It’s safe, easy and absolutely free. **And you can increase/decrease or cancel your contribution by simply contacting the Parish Office.**

It’s Safe!

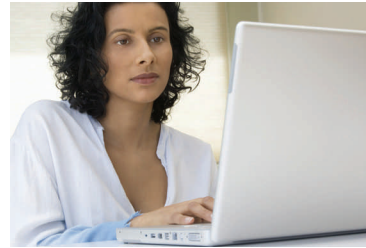
The Automatic Offering Plan is similar to payment programs offered by banks, telephone and utility companies. Your contributions are automatically withdrawn from a checking account. **It’s 100% safe.** No one but you can access your account and nothing can be withdrawn without your authorization.

Most of all, it allows you to be consistent in your giving, and helps St. Stephen’s to better fund our ministries.

Questions? Contact:

Monica Freeman
Stewardship & Development Coordinator
(763) 712-7438
mfreeman@ststephenchurch.org

Visit our website at:
www.ststephenchurch.org



What are the Advantages of Automatic Offering?

- Gives you the ability to be a “planned and proportionate giver” (1 Corinthians 16:2)
- Reduces the amount of paper for you and St. Stephen’s, providing a greener environment
- Gives you an easier and direct way to meet your commitment
- Allows St. Stephen’s to depend on your commitment, and to be assured the funds are available for various ministries
- **Provides you the freedom to change your pledge anytime you want**

Does anyone really pledge this way?

We have over 500 families on the Automatic Offering Plan. However, in a number of parishes, between one-fourth and one-half of the parish contributes in this way..



Convert Me!

1. Pledge Amount

My/Our Automatic Offering, will be \$ _____, to be paid:

- Each Week, withdrawn on _____
(day of week)
- Semi-Monthly, withdrawn on _____ and _____
- Each Month, withdrawn on _____
(date of month)

Start my withdrawals on this date: _____
(allow one week minimum)

2. Personal Information

Last Name First Name MI

Last Name First Name MI

Address

City State Zip

Home Phone Work Phone

3. Authorization

I authorize the Church of St. Stephen, 525 Jackson Street, Anoka, MN 55303, to withdraw my automatic offering from:

Bank Name Account Number



Please include a voided check to provide the necessary routing information.

I have enclosed a voided check to provide the necessary routing information. This authority will remain in effect until I notify the Church of St. Stephen in writing to cancel, at least one week prior to the next withdrawal date or by notifying my financial institution 5 days before my account is to be changed.

Signature Date

- Have someone contact me about alternative types of giving.